



Private bathroom

Reference

Construction of a new private bathroom

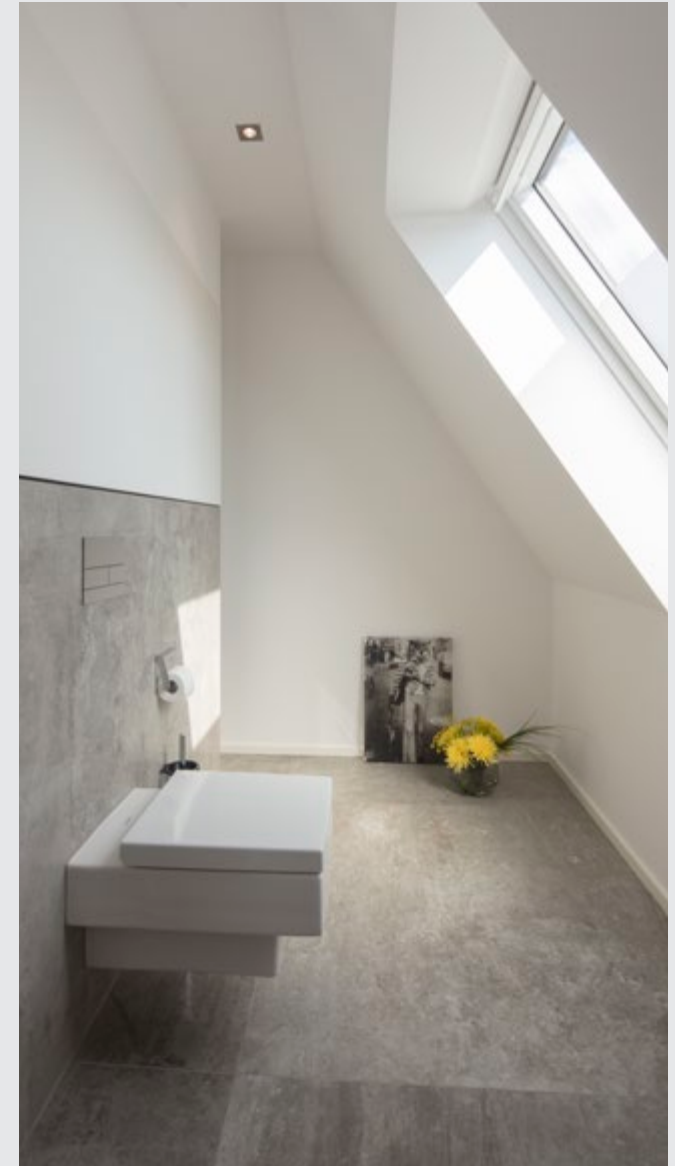
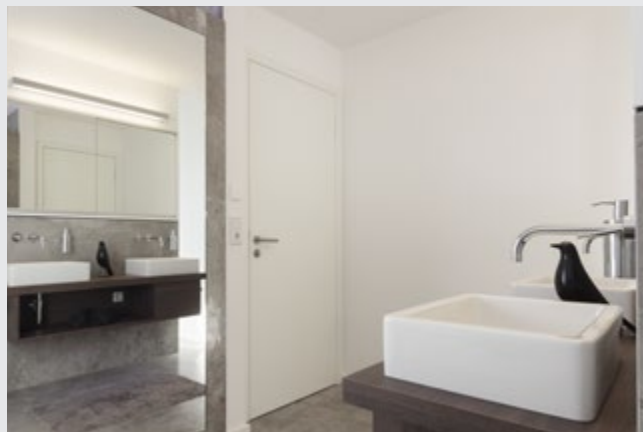
Location

Niedersachsen

Year

2017

Project type
New build



Requirements

- Quick and easy installation
- Integration of a “functional” partition wall
- Flush-to-floor shower with seat and storage space

Brief description

The clients knew exactly how they wanted their bathroom to look, namely “not everything along the wall”.

A special wall which carries away the static load from the mirror cabinet in addition to all of the pipework was therefore designed for mounting of the washbasin and toilet. Two flat bars were built in for this.



Products used

Basic products

- I board
- Building board
- Sanwell niche
- Fundo Riolito
- Bench No. 2
- wedi 610 adhesive and sealant
- wedi Tools joint reinforcement tape

Products used

Individual products

- Wall incl. pipework and flat bars for load removal

Products used

Plug & play systems

-

